



NATIONAL  
Family Support  
NETWORK

# 2023 National Briefing



May 31, 2023

---

# Welcome & Introduction

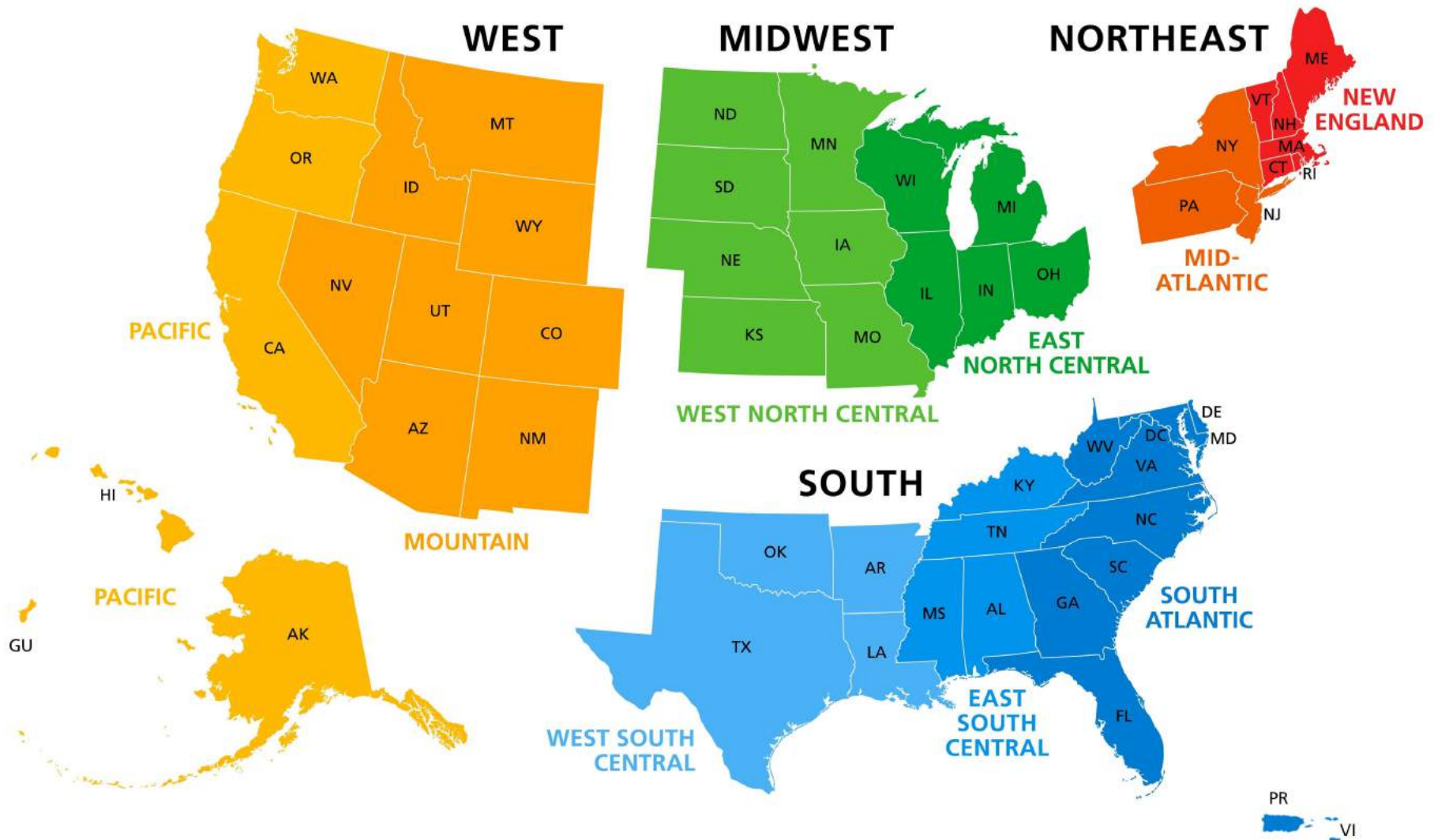


**Mary Ann Jennings**

NFSN Policy Committee Chair  
Kentucky Division of Family Resource &  
Youth Services Centers

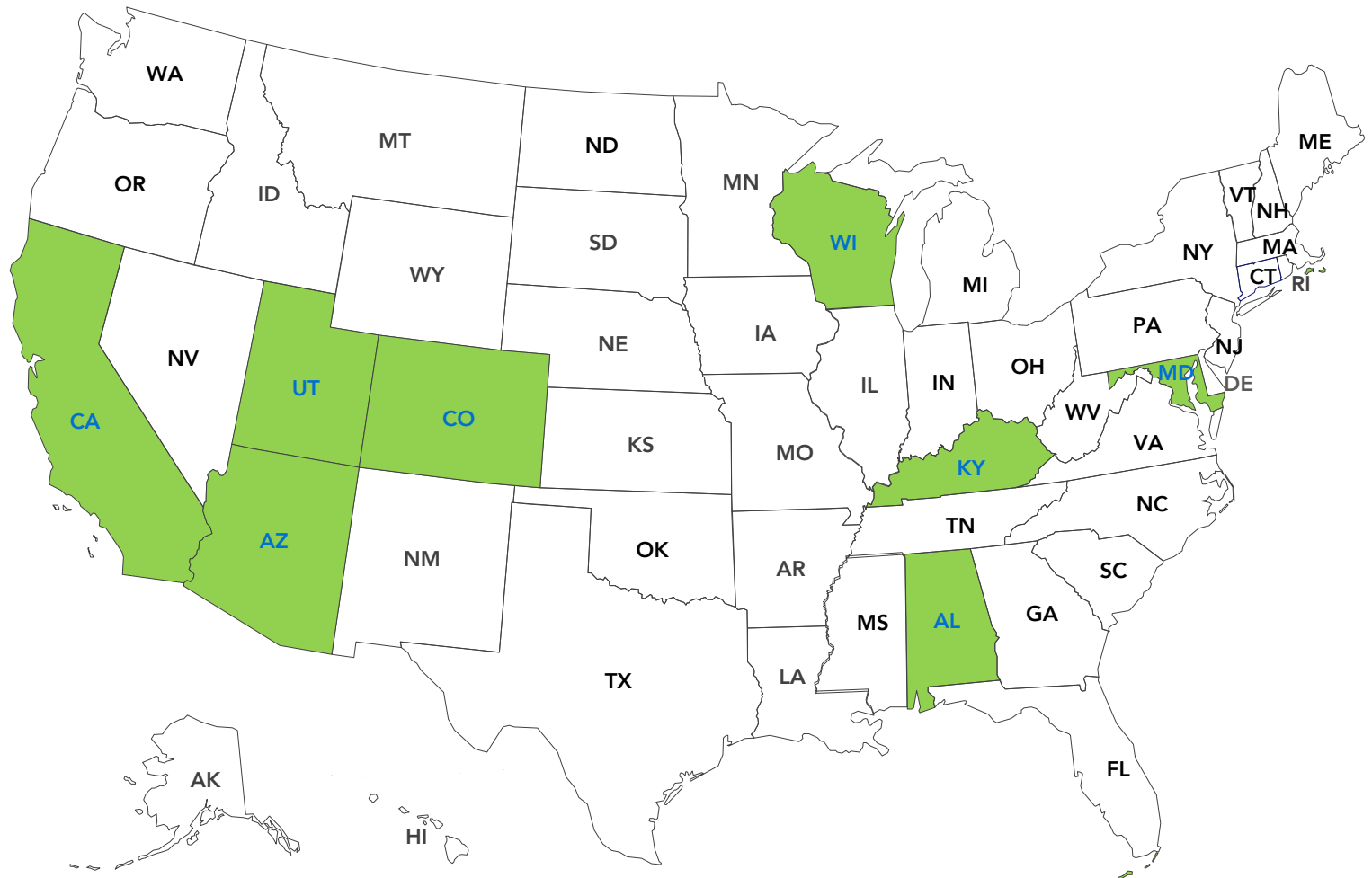


# Where are you joining us from?



# National Family Support Network

- Founded in 2011 by 8 state Networks as a membership organization
- Volunteer-coordinated until November 2015





# NFSN Mission

- To promote positive outcomes for all children, families, and communities by leveraging the collective impact of state Family Resource Center Networks and championing quality family support and strengthening practices and policies.

# NFSN Vision

- A nation in which every family is thriving and every state has a strong and effective Family Resource Center Network.

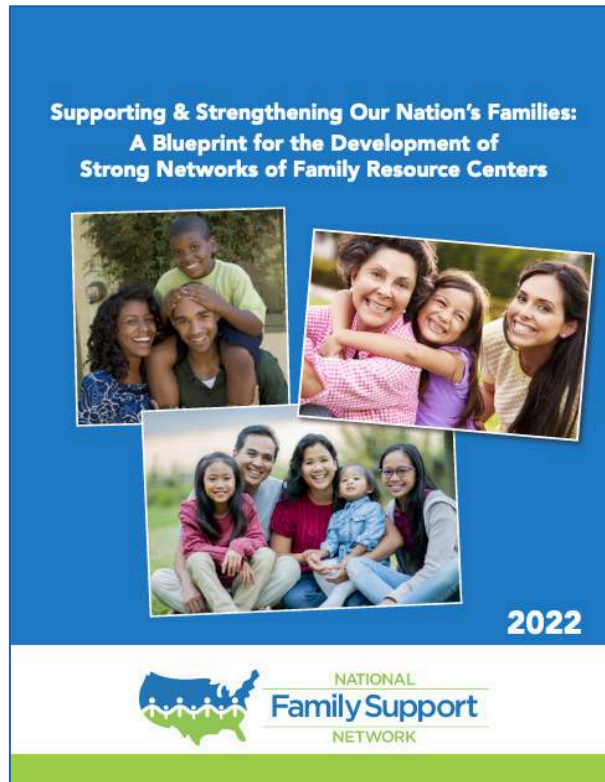


# NFSN Areas of Work

- 1. Connecting and convening member networks to enhance their effectiveness** - Increasing connectedness amongst members for peer learning and mutual support.
- 2. Promoting Family Support best practice and evaluation** - Raising awareness of what quality Family Support is and promoting a common language, standards, and evaluation of it through the national implementation of the Standards of Quality for Family Strengthening & Support.
- 3. Raising the visibility of the value and impact of FRCs and FRC Networks** - in order to strengthen and increase support for families.



# Briefing Objectives



- To focus national attention on the value and impact of Family Resource Centers and Family Resource Center Networks
- To report out on progress with implementation of the Blueprint
- To provide a unique opportunity for various stakeholders to connect with FRC Networks from across the country



# Supporting & Strengthening Our Nation's Families



## Blueprint for the Development of Strong Networks of Family Resource Centers

- I. Strengthen Existing FRC Networks
- II. Establish New Networks
- III. Strengthen the Family Resource Center Workforce
- IV. Connect and Leverage FRC Networks with Other Initiatives

# Speakers



**Emma Mogendorff**  
Program Officer  
Sauer Family Foundation  
Minnesota



**Janie Cole**  
Commissioner, Bureau for Family Assistance  
West Virginia Dept. of Health & Human  
Resources



**Cheryl Lissak**  
Kinship Caregiver  
New Hampshire



**Becky Berk**  
Impact and Evaluation Director  
New Hampshire Children's Trust



**Stan Rosenzweig**  
Chairperson, Board of Directors  
Family Support Centers of Utah



# Briefing Overview



## 2023 National Briefing



May 31, 2023

- Blueprint Area Report Outs
  - Progress Update
  - Bright Spot
  - Looking Forward
  - Connecting Dots
- NFSN Resources & Opportunities
- Exploring FRC Networks
- Thanks & Evaluation

# Blueprint Area 1: Strengthen Existing FRC Networks & Area 2: Establish New FRC Networks



**Andrew Russo**

Co-Founder & Director  
National Family Support Network



# Blueprint Area 1: Strengthen Existing FRC Networks & Area 2: Establish New FRC Networks

**Objective: Increase the capacity of existing FRC Networks**

**Objective: Support the creation of new Networks**

## Systems Change Actions

- Support efforts at the federal level to increase funding that can be leveraged for FRC Networks
- Support efforts at the state and county levels to leverage federal, state, and local funding for FRC Networks
- Encourage funders to allocate resources to FRC Networks to increase their capacity and sustainability and to seed and develop new FRC Networks



# Blueprint Area 1: Strengthen Existing FRC Networks & Area 2: Establish New FRC Networks

## Progress to Date

- Investments in FRC Network Infrastructure: Hawaii, North Carolina, Texas
- Deeper investments in FRCs: Georgia, Illinois, Indiana, Maryland, New Hampshire, New York City, New York State, Oklahoma, Utah, West Virginia
- New Networks Established: Minnesota, Nebraska
- First-time investments in FRCs: Kansas, Michigan, South Carolina, Virginia, Washington



# Bright Spots: Minnesota & West Virginia



**Emma Mogendorff**

Program Officer  
Sauer Family Foundation  
Minnesota



**Janie Cole**

Commissioner, Bureau for Family Assistance  
West Virginia Dept. of Health & Human  
Resources



# Blueprint Area 1: Strengthen Existing FRC Networks & Area 2: Establish New FRC Networks

## Looking Forward

### NFSN Internal Actions

- Advance policy discussions related to ensuring adequate resources for FRC Networks, providing impact data and an analysis of how FRC Networks are currently funded.
- Conduct outreach to key stakeholders in states without Networks, such as state human services departments, philanthropy, Children's Trust Funds, and existing FRCs to promote the concept of developing FRC Networks.





# Blueprint Area 3: Strengthen the FRC Workforce



**Matricia Patterson**

NFSN Policy Committee Member  
Supporting Families Together Association  
Wisconsin



# Blueprint Area 3: Strengthen the FRC Workforce

**Objective: Advance understanding of the value of the FRC workforce**

## Systems Change Action

Encourage systems to recognize that FRC work is valuable and needs to be adequately resourced.



# Blueprint Area 3: Strengthen the FRC Workforce

## Progress to Date

- Illinois provided additional funding to Family Advocacy Centers to increase salaries and staffing
- Vermont Network conducted a salary analysis comparing salaries and benefits of Parent Child Center staff with those of state government and education employees. Used it to advocate for increased funding to address wage and benefits gaps.
- Vermont legislature included \$2M increase in state budget. Governor vetoed budget, and there will be a veto override session in June.



# Bright Spot: Utah



**Stan Rosenzweig**

Chairperson, Board of Directors  
Family Support Centers of Utah



The mission of Family Support Centers of Utah is to ensure our Centers are optimally equipped to strengthen families and prevent child abuse.

Family Support Centers of Utah provides local Family Support Centers with the tools and resources to ensure they are strong and optimally equipped to strengthen Utah families and prevent child abuse.



**FAMILY  
SUPPORT  
CENTERS**  
*of Utah*



*Supporting Parents, Protecting Children, and Preserving Families*

## FAMILY SUPPORT CENTERS *of Utah*

**Davis County - Open Doors** ♥  
opendoorsutah.org  
Clearfield • 801-773-0712  
Layton • 801-771-4642

**Grand County Family Support Center** ♥  
grandcountyutah.net  
Moab • 435-259-1658

**Salt Lake** ♥  
familysupportcenter.org  
Midvale • 801-255-6881  
Sugar House • 801-487-7778  
Taylorsville • 801-955-9110  
West Valley • 801-967-4259

**Family Support Center of Southwestern Utah** ♥  
familysupportutah.org  
Cedar City • 435-586-0791  
Richfield • 435-896-4256

**Family Support Center of the Uintah Basin** ♥  
Roosevelt • 435-722-2401

**Family Haven** ♥  
family-haven.org  
Orem • 801-229-1181

**Family Support Center of Washington County** ♥  
fsc4kids.org  
St. George • 435-674-5133

**Weber County - Family Support Center Ogden** ♥  
fscogden.org  
Ogden • 801-393-3113

**Family Support Centers of Utah**  
utahfamilies.org  
Statewide • 801-875-0883

**Box Elder Family Support Center** ♥  
befsc.org  
Brigham City, Garland • 435-723-6010

**Cache County - The Family Place** ♥  
thefamilyplaceutah.org  
Logan, Hyrum, Smithfield • 435-752-8880

**Carbon County Family Support Center** ♥  
Price • 435-636-3739

# Statewide Network

11 Family Support Centers are strategically placed throughout Utah to provide services to all Utah families.

17 Crisis and Respite Nurseries are managed by those 11 centers.

Strengthening  
the  
Workforce

*How we got  
there*

## Needs Assessment 2021

**Top Funding Priorities as identified by 100% of the Family Support Center directors:**

1. Raising employee wages
2. Providing employee benefits.

## 2022 Legislative Session

Funding request to the Utah state legislature for \$3.4M State funding was **Approved!**

# Invest Now for Future Savings

---

Every \$1 invested in a Family Support Center results in \$3.65 of savings for the child welfare system per year.\*

\*[omni.org/nfsn-reports](http://omni.org/nfsn-reports)

Each substantiated case of child maltreatment costs an estimated \$830,928 over the victim's lifetime.\*

\*[health.utah.gov/vipp/kids/childmaltreatment](http://health.utah.gov/vipp/kids/childmaltreatment)





# Blueprint Area 3: Strengthen the FRC Workforce

## Looking Forward



### NFSN Internal Actions

- Develop a framework and tools to support Member Networks to conduct wages and benefits surveys and analysis in their states.
- Develop and provide budget advocacy tools for Member Networks.

# Blueprint Area 4: Connect and Leverage FRC Networks with Other Initiatives



**Robyn Shemwell**

Administrative Coordinator  
National Family Support Network



# Blueprint Area 4: Connect and Leverage FRC Networks with Other Initiatives

**Objective: Increase and highlight connections of FRC Networks with other initiatives**

## Systems Change Actions

- Facilitate connections between FRC Networks and current and proposed initiatives.
- Include FRC Networks in initiatives, funding opportunities, policy papers, and statements related to areas where they can affect impact.



# Blueprint Area 4: Connect and Leverage FRC Networks with Other Initiatives

## Progress to Date

- Together with Casey Family Programs and Chapin Hall, convene a cohort of FRC Networks and Child Welfare staff in 7 states (CO, IL, KY, ME, NJ, NY, WV) to coordinate efforts
- NFSN engaged as a Subject Matter Expert for the new Grandfamilies & Kinship Support Network
- Held Webinar Wednesdays highlighting the intersection of FRCs with Community Schools and Health Care
- Invited presenters to connect with NFSN Member Networks from Nonprofit VOTE, National Diaper Bank Network, and PACES Connection

# Bright Spot: New Hampshire



**Cheryl Lissak**

Kinship Caregiver  
New Hampshire



**Becky Berk**

Impact and Evaluation Director  
New Hampshire Children's Trust





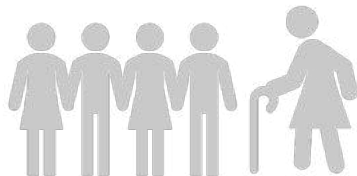
Becky Berk, Impact and Evaluation Director, NH Children's Trust  
Cheryl Lissak, Kinship Caregiver and Program Participant

# Kinship Navigation - Program Eligibility

Program participation is **free, voluntary** and open to grandparents, relative caregivers, and fictive kin who are raising a child/children in the absence of the child/children's biological parents.



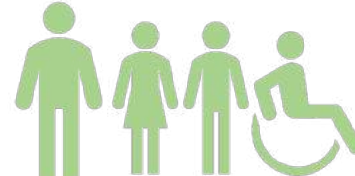
DCYF  
Placement



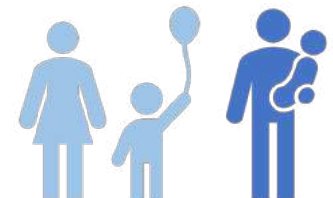
Legal Guardianship



Foster Care



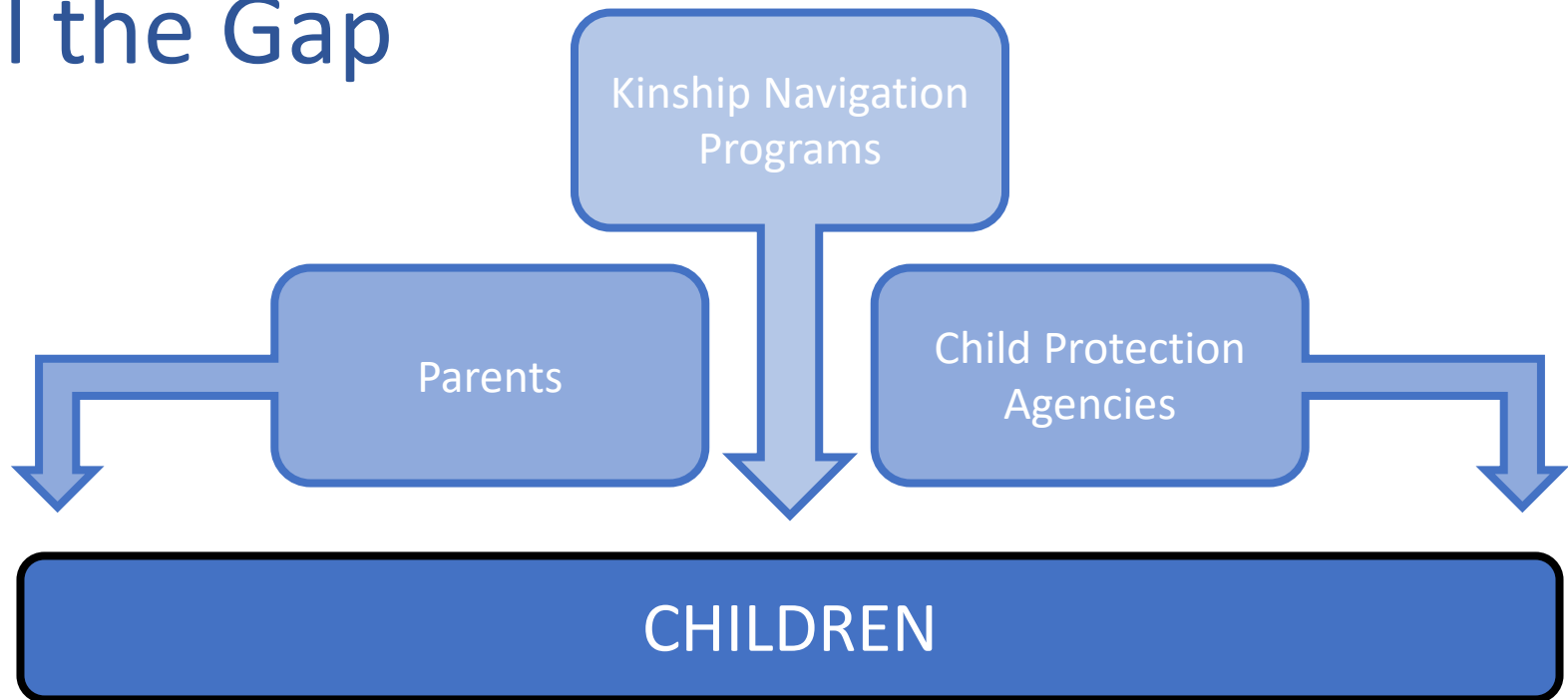
Adoptions



Informal Arrangements



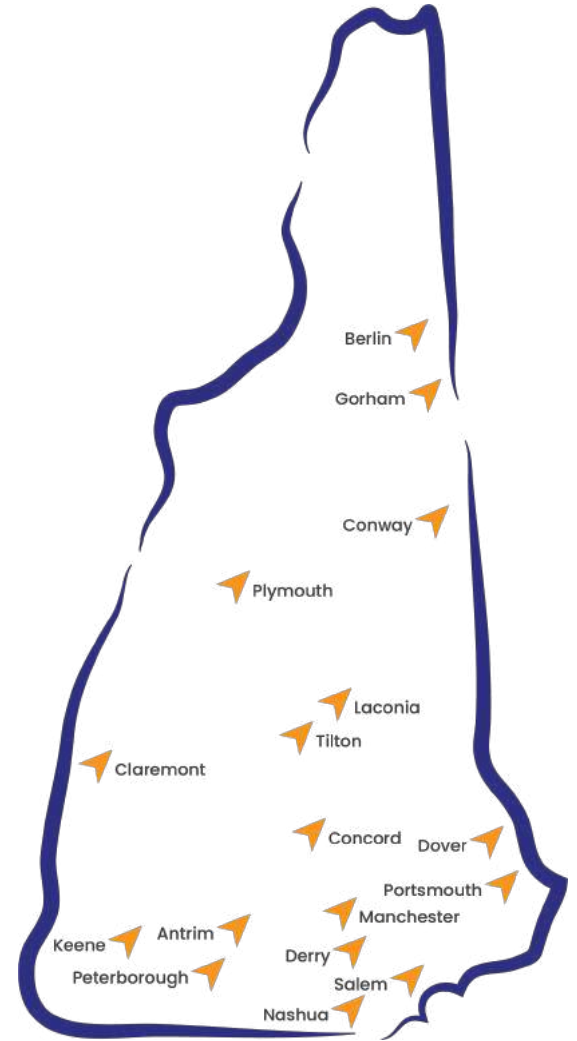
# Kinship Navigation Programs Fill the Gap







# Kinship Navigation Program Locations



# The Role of the Family Resource Centers

TO PROMOTE AND DELIVER THE KN PROGRAM TO ELIGIBLE FAMILIES IN THEIR COMMUNITIES



COLLABORATE



PROGRAM DELIVERY



SUPPORT GROUPS  
& TRAINING



OUTREACH &  
PROMOTION



COMMUNITY  
PARTNERSHIPS



DATA COLLECTION



# The Role of the Kinship Navigator

TO PROMOTE INDEPENDENCE AND ENHANCE WELL-BEING OF FAMILIES THEY SERVE



EMOTIONAL SUPPORT



EDUCATION



GUIDANCE



INFORMATION



REFERRAL



FOLLOW UP



# Program Funding & Administration



State of New Hampshire Department of Health & Human Services (DHHS)



Bureau of Economic and Housing Supports



Department of Child Youth Families (DCYF)



Center for Disease Control (CDC)



The Governor's Commission on Alcohol and Other Drugs



Administered by NH Children's Trust



# Numbers Served

| Kinship service status                            | Quickbase Family ID (distinct count) | Quickbase Person ID (distinct count) |
|---|--------------------------------------|--------------------------------------|
| <u>Declined</u>                                   | 40                                   | 93                                   |
| <u>Discharged</u>                                 | 219                                  | 659                                  |
| <u>Discharged from FRC without KNP enrollment</u> | 26                                   | 73                                   |
| <u>Enrolled</u>                                   | 336                                  | 1033                                 |
| <u>Not yet enrolled</u>                           | 22                                   | 59                                   |
| <b>Totals (5 groups)</b>                          | 632                                  | 1878                                 |



# Causal Factors

| SUD in family | Number of Kinship placements (% of col) |
|---------------|---|
| <u>Yes</u>    | 81.7%                                   |
| <u>No</u>     | 18.3%                                   |

| Parents incarcerated | Number of Kinship placements (% of col) |
|----------------------|---|
| <u>Neither</u>       | 86.8%                                   |
| <u>Mother</u>        | 4.1%                                    |
| <u>Father</u>        | 8.6%                                    |
| <u>Both</u>          | 0.5%                                    |

| Parents deceased | Number of Kinship placements (% of col) |
|------------------|---|
| <u>Neither</u>   | 83.8%                                   |
| <u>Mother</u>    | 7.8%                                    |
| <u>Father</u>    | 7.0%                                    |
| <u>Both</u>      | 1.3%                                    |

| DCYF involvement      | Number of Kinship placements (% of col) |
|-----------------------|---|
| <u>No involvement</u> | 38.4%                                   |
| <u>Active case</u>    | 23.8%                                   |
| <u>Closed</u>         | 37.8%                                   |



# A Kinship Caregiver's Perspective



**Cheryl Lissak**

Kinship Caregiver  
New Hampshire



# Contact

## **New Hampshire Children's Trust**

Becky Berk, Impact and Evaluation Director

[bberk@nhchildrenstrust.org](mailto:bberk@nhchildrenstrust.org)

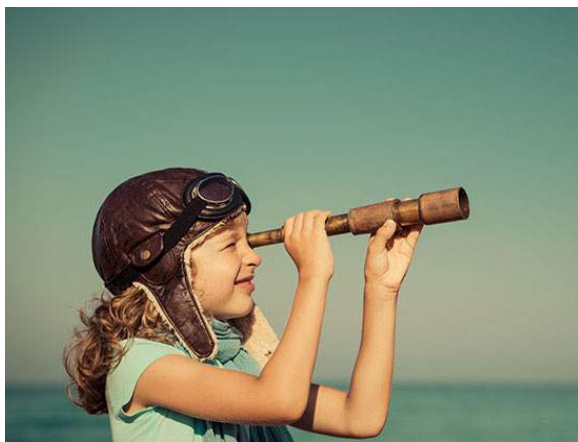
Becky Ayling, Kinship Program Manager

[kinship@nhchildrenstrust.org](mailto:kinship@nhchildrenstrust.org)



# Blueprint Area 4: Connect and Leverage FRC Networks with Other Initiatives

## Looking Forward



### NFSN Internal Actions

- Raise the visibility of the value of FRC Networks as potential partners in key initiatives.
- Connect Member Networks to initiatives and opportunities related to areas where they can affect impact.

# Connecting Dots



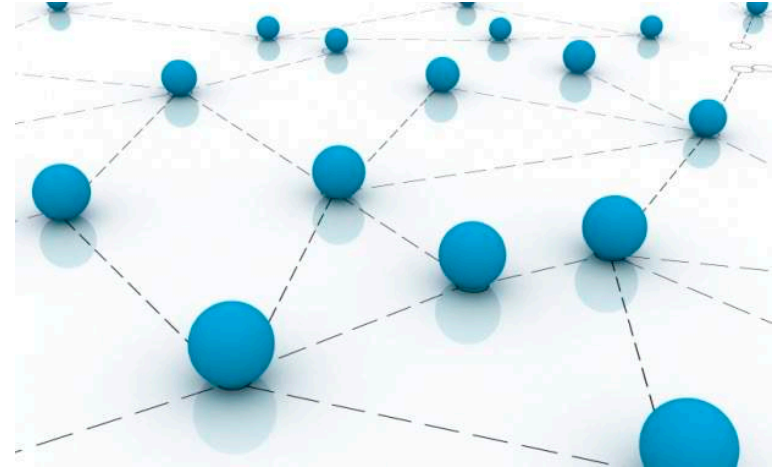
**Julie Matusick**

Senior Manager  
Standards Training & Implementation  
National Family Support Network



# Connecting Dots

- Click on link to go to the Connecting Dots Blueprint Supporter Form.
- Fill out your contact info on the first page, and then click “next” to share your ideas, resources, and suggested action items for any of the Blueprint Areas.
- If you cannot access the form, please fill out the Word document and send it to NFSN – Mary Robinson-Griffey



# NFSN Webinar Wednesdays



June 7, 2:30pm – 3:45pmET

Uncovering America's Best Kept Secret:  
Family Resource Centers and Family  
Resource Center Networks

Register at [www.nationalfamilysupportnetwork.org](http://www.nationalfamilysupportnetwork.org)

# Developing and Sustaining Effective Parent Advisory Committees Training

June 27 & 28

*Register by 6/15*

July 25 & 26

*Register by 7/13*



- Unique highly-rated virtual training for Program staff to maximize the great potential of Parent Advisory Committees
- Co-trained by NFSN staff and an experienced National Parent Leader

Register at [www.nationalfamilysupportnetwork.org](http://www.nationalfamilysupportnetwork.org)

# Standards Certification Trainings

Standards of Quality



for Family  
Strengthening & Support

June 29 & 30

NFSN Open Training

*Register by 6/19*

July 27 & 28

NFSN Open Training

*Register by 7/17*

- Register at: [www.nationalfamilysupportnetwork.org](http://www.nationalfamilysupportnetwork.org)
- Check the Certification Training page on the NFSN website to see if your state has a Network that currently offers the Standards Certification Training

# FRC Resources

- FRC Page of NFSN Website
  - FRC Overviews
  - Videos
  - Research reports
  - Systems-level funding information



[www.nationalfamilysupportnetwork.org/family-support-programs](http://www.nationalfamilysupportnetwork.org/family-support-programs)

- Webinar Wednesdays Library

[www.nationalfamilysupportnetwork.org/family-resource-center-webinars](http://www.nationalfamilysupportnetwork.org/family-resource-center-webinars)

# NFSN Hubs

## FRC Network Hub

A compilation of both NFSN templates and documents from Member Networks that can be used as examples for FRC Networks and Funders of FRCs

FAMILY RESOURCE CENTER



A compilation of resources for those developing an individual FRC

Access via NFSN website



# NFSN Services

- Facilitating connections to NFSN Member Networks
- Presenting for key stakeholders - education leaders, Child Welfare leaders, Children's Trust Funds, and other public and private funders - about working with and investing in Family Resource Centers
- Providing technical assistance for FRC Network development
- Providing Trainings:
  - Standards Certification Training
  - Developing and Sustaining Effective Parent Advisory Committees Training



# Exploring FRC Networks

- Unique opportunity to virtually visit up to 2 NFSN Member Networks
- Use Snapshots on Member Network map as a guide

## ALABAMA

ALABAMA NETWORK OF  
**FAMILY**  
RESOURCE CENTERS

Contact: Joan Witherspoon-Norris • joan@anfrc.org • 205-746-2446  
www.anfrc.org

The Alabama Network of Family Resource Centers (ANFRC) is a membership organization of nonprofit agencies that provide a wide array of services designed to protect children and strengthen families. ANFRC members are held to rigorous operational standards established by the Alabama legislature based on best practices for nonprofit management. These standards provide oversight of service delivery, fiscal management, and center administration and accountability. ANFRC envisions a state in which every family is thriving and every community has access to a strong and effective Family Resource Center. The Network is guided by these values: Stability for Children, Individualized Services, Strengths-based Partnerships, Collaborative Approach, Focus on Equity, Localized Approach, Prevention First, and Commitment to High Quality Operational Standards.

| At a Glance   | Network Functions   |
|---|---|
| <ul style="list-style-type: none"><li>• Network Structure: Independent Nonprofit</li><li>• Network Annual Budget: \$358,000</li><li>• Funding Sources:<ul style="list-style-type: none"><li>◦ Federal Community-Based Child Abuse Prevention (through Alabama Department of Child Abuse and Neglect Prevention)</li><li>◦ State Education Funds</li><li>◦ Private Foundations</li><li>◦ Earned Income</li></ul></li><li>• Types of Members:<ul style="list-style-type: none"><li>◦ Community-Based FRCs: 23</li></ul></li></ul> | <ul style="list-style-type: none"><li>• Connecting Members</li><li>• Training/Technical Assistance</li><li>• Working on Systems Change/Policy/Advocacy</li><li>• Pass-Through Funding to Members - occasionally</li><li>• Marketing/Public Awareness Activities</li><li>• Shared Data Management System</li></ul> |

|                       |               |   |
|-----------------------|---------------|---|
| YEAR<br>FOUNDED       | <b>1999</b>   | <h3>Member Service Areas</h3> <ul style="list-style-type: none"><li>• Parenting Support</li><li>• Access to Resources</li><li>• Family Development Services</li><li>• Child Development Activities</li><li>• Family Economic Success Activities</li><li>• Intentional Multiple Family Member Engagement Activities</li></ul>  |
| NETWORK<br>MEMBERS    | <b>23</b>     |   |
| INDIVIDUALS<br>SERVED | <b>42,289</b> |   |
|                       |               |   |



# Thanks & Evaluation

